



Pioneer™ Mogul Locomotive and Tender

The Great American Train Company is proud to present its new 1.5" scale Pioneer Mogul Locomotive with riding tender.

The Pioneer Mogul is battery-powered for reliability, safety and "turn the key and go" convenience. It is designed for use in club, backyard railroad and light commercial applications.

This model's styling is based upon the famous 2-6-0 Baldwin Mogul built by the Baldwin Locomotive Works of Philadelphia, Pennsylvania USA during the late 1800s to the early 1900s. Baldwin Moguls were often used in the narrow-gauge railroads of the Old West, including the Denver and Rio Grande.



"Backyard trains are a great hobby for the entire family."



Two Carlson Parkway North
Suite Three Hundred Seventy Five
Plymouth, Minnesota 55447 USA



GreatAmericanTrain.com

Phone: 1-800-486-0553
Fax: 763-475-6677
sales@greatamericantrain.com



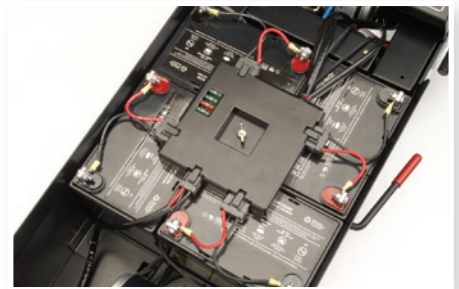
Features



Heavy-Duty Steel Frame. Our trains are meant to be used for years with little maintenance required. That's why we use rugged, welded steel frames for maximum durability.



Built-in Smoke and Steam Generator. We couldn't find a smoke and steam generator on the market that looked authentic enough. So we designed our own. You won't believe it until you see it!



Long Run Times. Four 12 VDC deep-cycle batteries with sophisticated motor speed controller deliver four to six hours of average run time per full charge (depending upon load and grade).



70-Watt Digital Sound System.

Two weather-resistant speakers with subwoofer deliver incredible depth and realism. "Chuff" sounds, along with smoke and steam, are synchronized with the speed of the train. Whistle and bell sounds are included.

Features



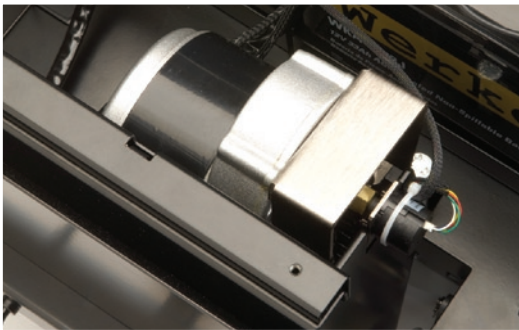
Lots of Accessories. Also available are rail, ties, tie plates, track and switch sections, screws, switch actuators, frogs and much more.



Commercial-Grade Paint. Metal surfaces are powder-coated for outdoor durability. Brass components are clear powder-coated to prevent tarnishing.



Made in the USA. Locomotives, riding cars, rolling stock, switches and track assemblies are manufactured at The Great American Train Company in Plymouth, Minnesota, USA.



Powerful Motors.

Four 250-watt 24 VDC motors provide a load capacity of 1600 lbs. on a 3% grade. Both the locomotive and tender are powered to utilize the weight of the batteries (and of the operator) for maximum pulling power and traction. Two motors are in the locomotive and two are in the riding tender.



Serialized Builder's Plate.

Solid pewter serialized builder's plate makes every locomotive a collector's edition.

The Pioneer Mogul Locomotive and Tender are built in the USA using world-class procedures and standards for quality, reliability and safety. When you become an owner, you'll be rewarded with years of enjoyment and reliable performance.



Specifications

Dimensions

Locomotive: 23"H x 15.6"W x 56.5"L (584mmH x 396mmW x 1435mmL)

Tender: 18"H x 20.5"W x 35"L (450mmH x 521mmW x 889mmL)

Weights

Locomotive: 177 lbs.

Tender (without batteries): 115 lbs.

Tender (with batteries): 215 lbs.

Scale

1.5" scale; also referred to as 1:8 or 1/8 scale

Locomotive Wheel Configuration

2-6-0 (two wheels in front, six in the middle and zero in back)

Motors

Four 250-watt, 24 VDC motors (1Kw total) with electronic speed control; keeps train at constant speeds up and down grades

Batteries

Four sealed, non-spill maintenance-free deep-cycle 12 VDC batteries, Type U1 (included)

Sound

Built-in 70-watt (peak) digital sound system with two main speakers and subwoofer

Computer Interface

Windows XP/Vista® PC with USB 2.0 port; used for locomotive firmware updates and future software enhancements

Brakes

Regenerative/anti-lock braking
Parking brake on tender

Gauge

Standard: 7.5"

Optional: 7.25"

Wheel Flange Depth

Standard: .5" for backyard and commercial use

Optional: .187" IBLs standard for club track use

Couplers

Operating knuckle couplers are designed to IBLs standards for riding cars and rolling stock

Rated Pulling Power

1600 lbs. (726 kg) of load capacity at 3% grade

Safety Features

Key on/off switch, emergency stop switch, seat interlock switch, parking brake, electronic speed control and hooks for safety chains

Controls

On/off key switch, emergency stop, forward/backward throttle, toggle switches for light, bell, whistle, smoke on/off/idle

Options

Extended Warranty

Smoke and Steam Fluid

Blank side panels if you prefer to add your own graphics



The Great American Train Company

Two Carlson Parkway North, Suite 375
Plymouth, MN 55446 U.S.A.
Ph: 1-800-486-0553 (U.S.A. and Canada)
or 763-476-5140
Fx: 763-475-6677
sales@greatamericantrain.com
www.greatamericantrain.com

Great American Train Europe

Mainzer Strasse 131
D-65187 Wiesbaden / Germany
Ph: +49 (0)611-92777-0
Fx: +49 (0)611-92777-50
sales@primeraeurope.de
www.gatceurope.eu

Great American Train Asia Pacific

Room 1206-7, 12/F New Victory House
93-103 Wing Lok Street
Central, Hong Kong
Ph: +852-3180-7171
Fx: +852-3014-7827
sales@primera-ap.com

GreatAmericanTrain.com